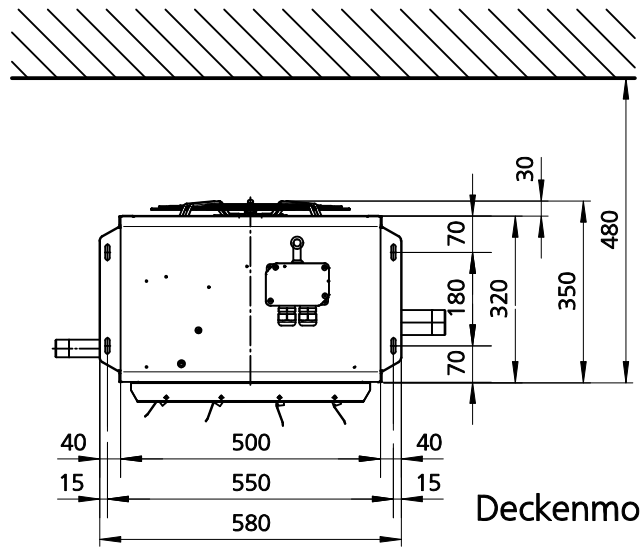


Wandmontage

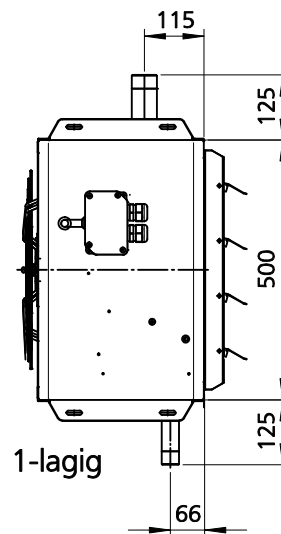
Anschlüsse

Dampf 1 1/2"

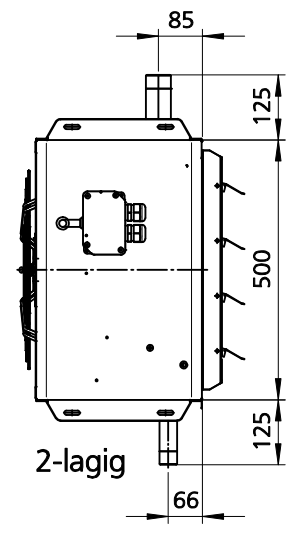
Kondensat 1"



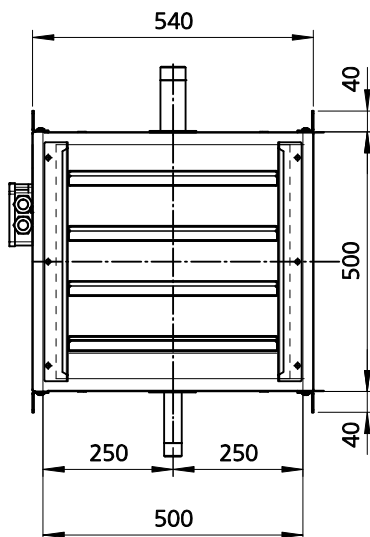
Deckenmontage



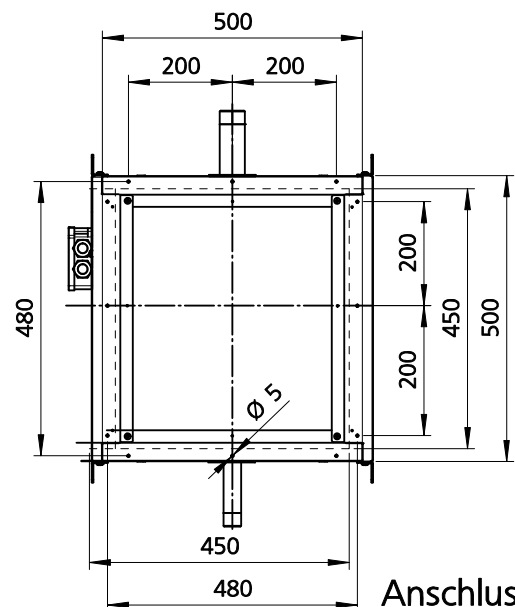
1-lagig




2-lagig



Vorderansicht



Anschlussbild

				Datum	Name	Format	Art-Gr.	Version	CAD-Nr.		
				Bearb.	16.07.09	dw	4	153	1	446531	
				Freig.							
				<div><p>49794 Lingen (Ems) Tel. (0591) 7108-0 · Fax 7108-300 eMail: info@kampmann.de Internet: www.kampmann.de</p></div>			Abmessungen Luftherhitzer Top Typ 44				
							Ansichten				
							WT Stahl, verzinkt für Dampf				
Index	Änderung	Datum	Name	Zul.Abw.	ISO 2768-m	Bereich	Konstruk	Maßstab	1:18	Blatt	